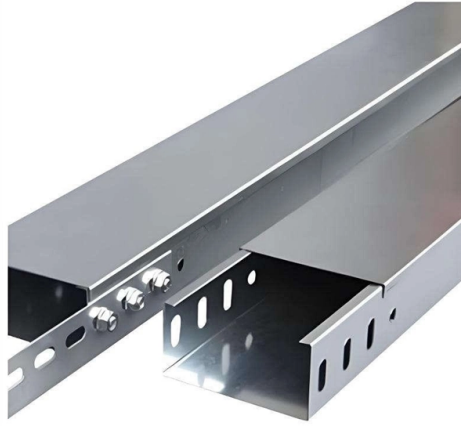


## Enable DHCP on the aggregation switch



### Overview

On the core switch, configure a management subnet for aggregation and access switches, enable the DHCP server function on the gateway interface of the subnet, and enable the controller address auto-negotiation function. You must globally enable DHCP snooping on the switch. If you want the switch to respond to DHCP requests, it must be configured as a DHCP. Equipped with eight SFP+ ports, two additional SFP28 ports and one RJ45 console port for configuration. It also enables easy expansion by simply adding more fiber or network. Basic working knowledge of general switch functions, security, the Internet Protocol (IP), and Simple Network Management Protocol (SNMP) is assumed. Product features and their settings are covered in more detail in the product's context-sensitive built-in help. Instant On currently supports switches with the following number of ports: The following procedure describes how to add a link aggregation group on the switch: Click the Devices ( ) tile on the Instant On web. "Campus Networks Typical Configuration Examples" provides typical campus network networking modes and a variety of deployment examples. It also provides verification, troubleshooting, and best practices for global IT professionals and SMBs. Part 1: Cisco Switch DNS and DHCP.

## Article Content

### AXIS D8308 Fiber Aggregation Switch

The switch has a serial console port that allows you to manage the switch through the command-line interface. Connect a console cable to the console connector on the switch.

### Link Aggregation

Under Link Aggregation, you must select either Static (default) or LACP as the aggregation type. This is an option settings. Under Security > Port Security, select DHCP and ARP Port Protections ...

### Configuring DHCP

The DHCP security features, such as dynamic ARP inspection or IP source guard, can still be enabled on the aggregation switch while the switch receives packets with option-82 information on untrusted ...

### How to Configure DHCP Server on Cisco Switches

This tutorial explains how to configure, test, and verify a DHCP server on a Cisco switch through a packet tracer example.

### Configuring Aggregation and Access Switches to Be Managed by the ...

On the core switch, configure a management subnet for aggregation and access switches, enable the DHCP server function on the gateway interface of the subnet, and enable the controller address auto ...

### Standalone AC Solution: Aggregation Switches and ACs Function as ...

Configure DHCP on the aggregation switches and ACs so that the switches and ACs function as DHCP servers to assign IP addresses to wired and wireless users and APs. Configure VRRP and HSB on ...

### DHCP snooping on aggregated links

Have you tried collecting packet captures on the port-channel and checked the DHCP (DORA) process, also check the logs for both the boxes for any syslog related to snooping.

### IP Addressing Services Configuration Guide, Cisco IOS XE 17.18.x ...

To use the DHCP snooping option of accepting packets on untrusted inputs, the switch must be an aggregation switch that receives packets with option-82 information from an edge switch. ...

### AXIS D8308 Fiber Aggregation Switch

It comes with an individual password, easy to use setup wizard, and a comprehensive set of configuration tools. For instance, an integrated DHCP server for automatic assignment of IP ...

How to configure DNS and DHCP on Cisco switches?

Learn how to configure DNS and DHCP on Cisco switches to optimize network management. This comprehensive guide covers CLI commands, best practices, troubleshooting, and deployment tips ...

Help configuring an EX2300 : r/Juniper

By using this you can use both interfaces with load balancing, just need to ensure the AE interface itself is configured as an access port in whatever VLAN you want to use, although the option to tag ...

## Contact Us

For more information, pricing, or custom solutions, please contact us:

Website: <https://www.automationauthoritiesolar.co.za>

Email: [info@automationauthoritiesolar.co.za](mailto:info@automationauthoritiesolar.co.za)

Phone: +27 82 547 3961

Address: 15 Quantum Street, Technopark, Centurion, 0157, South Africa

This document is for informational purposes only. Specifications subject to change without notice.

