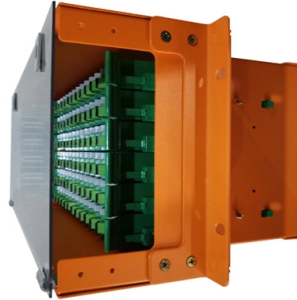


How to seal bridge arch holes



Overview

A sealing compound (either poured rubber or silicone) is poured from the roadway surface to seal the opening. Follow all manufacturer's instructions for pre joint above the initial bead of adhesive. Position the strip seal. A variety of devices have been incorporated in the design of bridge deck expansion joints. Closed joints are designed to be waterproof, while open joints. When sealing joints for slab spans, slab beam spans, or box beam spans, fill void below backer rod with extruded polystyrene foam before placing backer rod. Recess seal 1 2 " below top of concrete in travel lanes and 1 4 " below top of concrete. Hot pour bridge joint sealing is used to prevent dirt, debris, and chlorides from deteriorating the deck and supporting bridge members. The work is done March thru May and September thru December, weather permitting with temperatures between 45 to 80 degrees. 3005) Bridge, a single-span arch bridge in Fairmount Park, Philadelphia. These are designed for use in different situations or collectively in alternative combinations, to greatly reduce damage to the concrete.

Article Content

CLEANING AND SEALING EXISTING BRIDGE JOINTS

Joint surfaces must be completely dry. Do not install strip seal system immediately after a rain event or if precipitation is forecast for the day. Prepare joints and install strip seal system on the same day. If ...

PRELIMINARY

Place backer rod into joint opening 1" below the top of concrete. When sealing joints for slab spans, slab beam spans, or box beam spans, fill void below backer rod with extruded polystyrene foam before ...

Sika Bridge Solutions

Combining Sikadur joint nosing mortar with Sikasil sealants and EMSEAL expansion joint systems allows Sika to offer full-system solutions for joint construction and repair on bridges and highways.

Bridge Maintenance Manual

Although some small bridges incorporate simple open gaps in the bridge deck to accommodate bridge expansion and contraction, the preference is to use sealed joints to prevent ...

PENNDOT STONE ARCH BRIDGE MAINTENANCE MANUAL

Restore a missing arch ring/barrel or section of an arch ring/barrel based on documented evidence, such as an intact section of the arch ring/barrel, historic photographs, plans, or an intact arch ring on ...

Bridge Crack Repair

Bridge crack repair using structural epoxy injection is a cost-effective and dependable approach that meets the needs of modern infrastructure ...

Stone Arch Bridge Maintenance Manual

It details the typical components of stone arch bridges, such as the arch ring and spandrels. The document recommends clearing vegetation, improving drainage, and removing debris to maintain ...

Controlling Shrinkage Cracking

Low-shrinkage mixtures are also used to minimize cracking in bridge decks, with the ultimate goal of boosting service life. As Maggenti, Knapp, and Fereira (p. 36) report, California's department of ...

771.10 Bridge Joint Sealing

Hot pour bridge joint sealing is used to prevent dirt, debris, and chlorides from deteriorating the deck and supporting bridge members. The work is done March thru May and September thru December, ...

Application Guide to Bridge Joint Repairs | Holderchem

Effective repair of bridge joints demands a systematic approach with high-quality materials. Regular inspections and maintenance are essential to extend the lifespan of bridge structures.

Bridge & Highway Solutions | Sika Canada

Remedial works on concrete bridge structures often include the requirement for void filling, fixing and sealing or bedding and grouting with free-flowing materials.

Repairing Fill-Related Problems

Fill-related problems in a stone arch bridge take on several forms, but often result in bulging, sliding, and failure of bridge components. These problems can be addressed.

BRIDGE MAINTENANCE AND REPAIR HANDBOOK

The procedure consists of drilling holes in the pavement and pressure pumping a slurry of fine soil materials and a hardening agent into the holes, causing the pavement to rise as the slurry fills any ...

Arch Bridges

Seal all components of the arch within the splash zone with silane/siloxane or epoxy/urethane. Identify the transverse contraction joints in the deck near each ...

FHWA Bridge Maintenance: Substructure

Coatings that adhere to the concrete, seal the surface, bridge small cracks and provide some resistance to attacks by deicing chemicals include: Epoxy Resins, Hard Urethane, and Methacrylate.

Contact Us

For more information, pricing, or custom solutions, please contact us:

Website: <https://www.automationauthoritiesolar.co.za>

Email: info@automationauthoritiesolar.co.za

Phone: +27 82 547 3961

Address: 15 Quantum Street, Technopark, Centurion, 0157, South Africa

This document is for informational purposes only. Specifications subject to change without notice.

