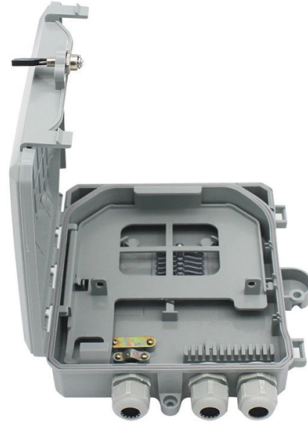


Huawei Switch Access Network



Overview

This text is a guide detailing Basic Command Line Interface (CLI) Commands on Huawei brand switches. Huawei's comprehensive portfolio of products and solutions enables you to realize smooth digital transformation and rapid growth of virtualization, Big Data, and cloud services. Huawei switches already help customers achieve success in industries such as finance, Internet, retail, education. Use the following commands to set a port to trunk mode. For example: Replace VLAN_LIST with the VLANs allowed on the port. Use commands like display interface GigabitEthernet0/0/10/0/1 to verify correct configuration. "Campus Networks Typical Configuration Examples" provides typical campus network networking modes and a variety of deployment examples. For those in search of the best Huawei access. The CloudEngine S5731-S series offers a range of standard gigabit access switches, with all-GE electrical/optical ports and fixed 10 GE uplink ports.

Article Content

Network Switches | Huawei Enterprise

Huawei campus switches are ideal for building future-proof campus networks with simplified management, high reliability, and service intelligence, across industries such as enterprises, ...

HUAWEI SWITCH BASIC CONFIGURATIONS WITH EXAMPLE(5 ...

Access port config: An access port belongs to and carries the traffic of only one VLAN within 2-layer switch. Traffic is both received and sent in native formats with no VLAN tagging...

CloudEngine S5731-S Series Switches | Huawei Enterprise

Gigabit access switches providing all-GE electrical ports. The CloudEngine S5731-S series offers a range of standard gigabit access switches, with all-GE electrical/optical ports and fixed 10 GE uplink ...

Best Huawei Access Points, Hubs, and Switches: A Comprehensive ...

For those in search of the best Huawei access points, hubs, and switches to enhance their network infrastructure, this definitive guide serves as a compass to navigate the vast array of ...

How to Enable Ports in Huawei Switch? Could Open Ports Unlock ...

Configuring ports on a Huawei switch is a fundamental yet critical task for network administrators. Whether you're setting up a new network segment or troubleshooting connectivity ...

Switches

With multiple industry-leading intellectual properties and patents, Huawei provides more than a hundred switch models in more than 10 series, including access, aggregation, and core switching.

Basic CLI Commands on Huawei Switch

This text is a guide detailing Basic Command Line Interface (CLI) Commands on Huawei brand switches. It provides step-by-step instructions for users to perform fundamental network configuration ...

Example for Configuring a Layer 3 Switch to Work with a Router for ...

Layer 3 switches provide the routing function, which indicates a network-layer function in the OSI model. Layer 3 switches can work at Layer 2 and Layer 3 and be deployed at the access layer or ...

Huawei Ethernet Switch & Network Switches Solutions

Find an access or aggregation switch on a campus network or in. Huawei's comprehensive portfolio of switches enable you to achieve smooth digital transformation and rapid growth of virtualization, Big ...

Example for Configuring a Traffic Policy to Limit Access Between ...

Configure a traffic policy on the Switch, bind the traffic policy to the traffic classifier and traffic behavior, and apply the traffic policy to GE1/0/1 connected to Switch A in the inbound direction ...

Contact Us

For more information, pricing, or custom solutions, please contact us:

Website: <https://www.automationauthoritysolar.co.za>

Email: info@automationauthoritysolar.co.za

Phone: +27 82 547 3961

Address: 15 Quantum Street, Technopark, Centurion, 0157, South Africa

This document is for informational purposes only. Specifications subject to change without notice.

