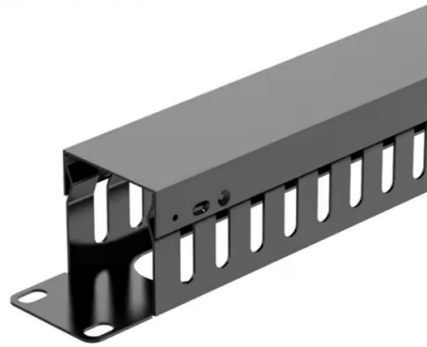


Install air switch in the distribution box



Overview

Remove the small plastic nuts from the air switch and the control box. Hand tighten both nuts to. 1, the general switch of the household distribution box can generally choose double-pole 32-63A small air switch or isolation switch. Enjoy the videos and music you love, upload original content, and share it all with friends, family, and the world on YouTube. At its core, the Dometic Air Distribution Box functions as an air management hub that receives conditioned air from your rooftop HVAC unit and distributes it methodically throughout your RV's interior spaces. Unlike residential HVAC systems that benefit from spacious mechanical rooms and abundant. Should assemble more than 40% (19k) of standard capacity (48k) in the outdoor unit and with over 2 indoor units. This unit may only be. Rooftop air conditioner (air distribution box, wall thermostat controls) Need help?

Do you have a question about the FreshJet3 Series and is the answer not in the manual?

Page 1 CLIMATE CONTROL FRESHJET FreshJet3 Series and FreshJet4 Series Rooftop Air Conditioner (Air Distribution Box, Wall. This control system provides safe and convenient remote on/off switching of one 120V load. Contents: Controller, Air transmitter and air hose.

Article Content

DISTRIBUTION SOLUTIONS Indoor Air Switch-disconnector, ...

The NAL/NALF/VR brand is recognized globally and over 600,000 switches have been produced so far. The design is subject to continuous development to meet changing customer needs.

Air Switch Installation Instructions

Push the ends of the air tubing through the small plastic nuts. Firmly press one end of the air tubing into the Air Switch, and the other into the Air Switch Control Box.

Dometic Air Distribution Box Guide: Installation & Troubleshooting

Complete guide for your Dometic Air Distribution Box. Get installation help, troubleshooting tips, and find genuine replacement parts for RV air conditioners.

LG BRANCH DISTRIBUTOR UNIT INSTALLATION MANUAL

This unit has two different installation types: Ceiling-suspended type and (2) wall-mounted type. Choose the proper installation pattern according to the location of installation. The installation location for ...

Installation Manual for Air Distribution Systems

These installation instructions cover the Unico System air distribution system including the return air components and secondary drain pans as shown in Figure 1.

Dometic Air Distribution Box Guide: Installation

Complete guide for your Dometic Air Distribution Box. Get installation help, troubleshooting tips, and find genuine replacement parts for RV air ...

DOMETIC FRESHJET3 SERIES INSTALLATION MANUAL Pdf ...

Dometic FreshJet3 Series Installation Manual Rooftop air conditioner (air distribution box, wall thermostat controls)

Indoor Air Switch-disconnector,

Bolt the open fuse auxiliary switch to the mounting hole on the A-mechanism and loosely install the screw hardware to allow the switch to rotate into the slot, pictured in figure 73.

Wiring requirements and specifications for air switches in distribution ...

The above air switch installation is for reference only, the actual power of electrical appliances in each household is not the same, the specific design of the electrician shall prevail.

023485 Operation video for installing air switch distribution box

Enjoy the videos and music you love, upload original content, and share it all with friends, family, and the world on .

Wiring Requirements and Specifications for Air Switches in Low ...

② The empty circuit breaker, wiring wires, wiring ties, etc. inside the box have been prepared and meet the design drawings and installation requirements for Low-voltage distribution cabinet.

Installation Manual

Installation Overview: After your Air Springs and Suspension Components have been installed, you can begin installing the AccuAir components in the following order:

BRS-111.qxd

As the air transmitter but-ton is depressed and released, sealed air is displaced and transmitted through the intercon-necting air hose to the pressure sensitive electrical switch, completing the electrical ...

Replace the air switch for the household distribution box

Enjoy the videos and music you love, upload original content, and share it all with friends, family, and the world on .

Contact Us

For more information, pricing, or custom solutions, please contact us:

Website: <https://www.automationauthoritysolar.co.za>

Email: info@automationauthoritysolar.co.za

Phone: +27 82 547 3961

Address: 15 Quantum Street, Technopark, Centurion, 0157, South Africa

This document is for informational purposes only. Specifications subject to change without notice.

