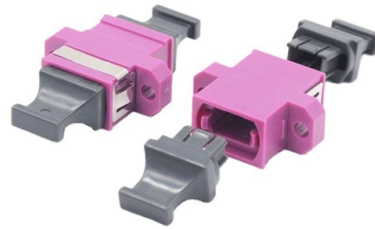


## Laser diode grounding



### Overview

Protecting your laser product can be as easy as wearing a grounding wrist strap at all times when handling the laser diode, including during the unpacking and inspection process. Properly grounded anti-static mats are also useful. Earth Ground: the Earth Ground is a safety ground and should carry current only in case of a fault condition, such as an internal insulation breakdown. Grounding a laser diode and the. How to ground your diode engraver, to limit bugs during engraving, made on twotrees ts2 10w, also works for other diode lasers, approximate setup. The cable passes through the cable guide chain. photo 3: Photo: a. After my previous question I noticed that the laser diode I have is anode-grounded, meaning that the case (which is the diode's metal case and often connected to circuit ground to reduce noise, I guess) is tied to the anode of the laser diode. If the metal case has to be connected to the ground, it is necessary to use an anode grounded or a cathode grounded laser driver, as shown in the figure below: Anode grounded drivers. The purpose of this laser diode tutorial is to provide the information necessary to create a long lifetime, stable laser diode system.

## Article Content

### AN-LD16: Grounding with Special Laser Diode Configurations

In this Application Note we'll explain a wide variety of best practices for grounding laser diodes and drivers. We'll point out common dangers and ways to avoid them, and help you to build robust and ...

### Understanding the basics of laser diode drivers

Some lasers diodes have their positive side (anode) or negative side (cathode) connected to the diode's metal case. If the metal case has to be connected to the ground, it is necessary to use ...

### Laser Diode Characteristics, Precautions for Use and Drive Circuit ...

Laser diodes (LD) are semiconductor devices that convert electrical energy into high-power optical energy. These devices are currently used in the fields of telecommunications and medicine and in ...

### HANDLING AND INSTALLATION GUIDE FOR CONDUCTIVELY ...

All items that come in contact with the laser diode must be continuously grounded to avoid electrostatic discharge (ESD). Leonardo is not responsible for ESD-damaged products.

### Laser Diode Tutorial

Laser Diode Tutorial The purpose of this laser diode tutorial is to provide the information necessary to create a long lifetime, stable laser diode system. Much of what will be discussed will be in general ...

### ANODE AND CATHODE ARE NOT CONNECTED TO GROUND

e laser driver are connected to earth ground. Some man facturers build their laser drivers this way. An anode-ground or cathode-ground connection can become a problem later for some setups and ...

### Ground connection, earthing

These replies are pretty much on target. A ground is for static charges, up but not including a direct lightning hit. A shield, like shielded USB cables with or without ferrites, is for ...

### Can I use an anode-grounded laser diode with a positive ...

If you fed the anode from a positive bias generator and the metal ...

### Laser Diodes: Laser diode operation 101: A user's guide

Anode and cathode isolation from ground is accomplished in a laser driver with an anode-ground or cathode-ground connection. While earth-grounding the laser is typically recommended, ...

AN-LD16: Grounding with Special Laser Diode Configurations

Solution: Break the Ground Short at One Point (C or D) Laser Diode It is common practice to earth-ground the optical table in order to help reduce system electrical noise, and for safety reasons, so it's ...

AN-LD16: Grounding with Special Laser Diode ...

Solution: Break the Ground Short at One Point (C or D) Laser Diode It is common practice to earth-ground the optical table in order to help reduce system electrical ...

Can I use an anode-grounded laser diode with a positive supply if it ...

If you fed the anode from a positive bias generator and the metal body got grounded by a user making an optical connection to the laser, it would short out the laser (not harm it of course) and ...

WHAT IS A GROUND LOOP?

There are several laboratory practices you can apply to break a ground loop. Each of these methods involve physically interrupting the ground loop, so it is important for you to understand the potential ...

## Contact Us

For more information, pricing, or custom solutions, please contact us:

Website: <https://www.automationauthoritiesolar.co.za>

Email: [info@automationauthoritiesolar.co.za](mailto:info@automationauthoritiesolar.co.za)

Phone: +27 82 547 3961

Address: 15 Quantum Street, Technopark, Centurion, 0157, South Africa

This document is for informational purposes only. Specifications subject to change without notice.

