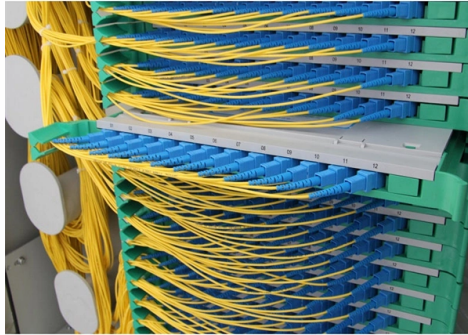


Wiring Standards for Distribution Box Outlets



Overview

Check for proper IP/NEMA ratings and material quality. Ensure safe placement: install in dry, accessible areas with good ventilation and at appropriate height (typically ~1. Practice good wiring: secure grounding, neat cable management, proper insulation, and correct wire gauge. Covers wiring, placement, standards, and expert tips for a compliant setup. It takes the incoming power and safely distributes it to different circuits throughout your building. If it detects even a tiny imbalance (like electricity leaking through water or a person), it shuts off power instantly—helping to prevent electrical shocks. You'll recognize a GFCI outlet by. Wiring methods. The provisions of this paragraph do not apply to conductors which form an integral part of equipment such as motors, controllers, motor control centers and like equipment. Metal raceways, cable armor, and. Energy & Smart Homes · Permits & Code · Toupin Construction We were mid-kitchen remodel in a Rossmoor condo — beautiful job, the homeowner had great taste — when the inspector showed up and flagged the island. Article 314 applies to: These.

Article Content

A Complete Guide to NEC Article 314 on Electrical Boxes and Conduit ...

NEC Article 314 establishes requirements for the installation and use of electrical boxes, conduit bodies, fittings, and handhole enclosures.

Electrical Receptacle, Switch and Control Heights | UpCodes

Required receptacle outlets shall be permitted in floors when adjacent to sliding panels or walls. Baseboard electrical outlets used in relocatable partitions, window walls or other electrical ...

The installation requirements for the distribution box

Learn how to install a distribution box safely and correctly. Covers wiring, placement, standards, and expert tips for a compliant setup.

Latest Requirements for Distribution Box Installation under the US ...

The Heart of Your Electrical System Think of your home's distribution box as the Grand Central Station of your electrical system. Just like travelers need clear pathways and safety protocols, your electrical ...

Electrical Box Dimensions: Find the Right Size for Any ...

Learn standard electrical box dimensions for outlets, switches, and junction boxes. Compare sizes, depths, volume, and clearance for safe installations.

Electrical Code Requirements for Outlets in the Home

Electrical code requirements for outlets provide guidelines for spacing and other issues. Learn how the current code affects outlet installation.

1926.405

In energized installations each outlet box shall have a cover, faceplate, or fixture canopy. Covers of outlet boxes having holes through which flexible cord pendants pass shall be provided with bushings ...

California Electrical Codes: East Bay Homeowner's Guide (2026)

Every state follows the National Electrical Code (NEC) as a baseline — the federal framework that covers the fundamentals of safe electrical installation. California adopts the NEC and ...

Understanding GFCI and AFCI Outlets: What California Codes ...

As California updates its electrical codes for 2025, many homeowners and property managers are asking: What exactly are GFCI and AFCI outlets, and where do I need them? These ...

How to Install a Cable Distribution Box Safely and Correctly?

By following the guidelines in this article and working with reliable suppliers such as Chuanli, the safety, reliability, and compliance of electrical distribution boxes or distribution boxes ...

Contact Us

For more information, pricing, or custom solutions, please contact us:

Website: <https://www.automationauthoritysolar.co.za>

Email: info@automationauthoritysolar.co.za

Phone: +27 82 547 3961

Address: 15 Quantum Street, Technopark, Centurion, 0157, South Africa

This document is for informational purposes only. Specifications subject to change without notice.

